



2018 IEEE Transportation Electrification Conference and Expo (ITEC '18)

Long Beach Convention Center
Long Beach, CA, USA
June 13-15, 2018
www.itec-conf.com

Exhibit Hall Hours

Wednesday, June 13, 2018: 12:00 pm - 7:00 pm
Thursday, June 14, 2018: 12:00 pm - 7:00 pm

ITEC Sponsors:



Exhibitor Directory

AC Power Corp	39
Advanced Test Equipment Rentals	37
Altair Engineering, Inc.....	24
Chroma USA	28
Cogent Power	38
D&V Electronics	1
E&M Power.....	26
Elantas PDG.....	20
Electronic Concepts, Inc.....	25
Faraday Future	18
FF91	Vehicle 1
HBM Test and Measurement	2
Hioki USA.....	19
IEEE Industry Applications Society.	23
John Deere.....	4
Karma.....	30
Karma Revero.....	Vehicle 2
LCS Company.....	13
Linear Labs	40
MacAUTO.....	17
Mathworks.....	21
Mentor Infolytica	16
Motor Design Limited	33
NH Research.....	35
Opal-RT	15
Plexim	29
Powersys Solutions.....	5
RTDS Technologies	32
Software Motor Company	34
Suzhou Zhongcheng New Energy Technology Co. Ltd.....	14
TDK Lambda: High Power Division	22
Tridus Magnetics.....	27
IEEE Transportation Electrification Community/Power Electronics Society	31
Yunsheng USA	9

192 Technology Dr., Suite S
Irvine, CA 92618

T: 1(949)9819768

E: brian.hsu@acpower.net

W: <http://www.preenpower.com/>

Booth Representatives: Brian Hsu and Joe Engler

Established in 1989 Preen had become a major manufacturer of programmable AC and DC Power Sources and Static Type Frequency Converters. Preen is considered to be the world leading manufacturer of large capacity power sources widely used in industrial, military, aerospace and new energy testing applications.



Preen[®]
Power Solutions

Reliable AC & DC
Programmable Power Supplies

Preen provides reliable and cost effective programmable AC and DC power source for testing purposes

10401 Roselle Street
San Diego, CA 92121

T: 1(800)404-2832

E: galcala@atecorp.com

W: <http://www.atecorp.com/>

Booth Representative: Chris Reed and Gabriel Alcala



Rent automotive transient generators, voltage drop simulators, grid simulators, ESD guns or any of the thousands of other pieces of test equipment in stock at Advanced Test Equipment Rentals (ATEK). We offer short-term and long-term rental options, with equipment ready to ship for next day delivery. Get all the calibrated test equipment you need for test standards from the industry's trusted rental leader...Advanced Test Equipment Rentals.

1820 E Big Beaver Rd
Troy, MI 48083

T: 1(248)614-2400

E: sgettig@altair.com

W: www.altair.com

Booth Representatives: Philippe Wendling and Tan Pham



Altair is a leading provider of enterprise-class engineering software enabling innovation, reduced development times, and lower costs through the entire product lifecycle from concept design to in-service operation. Our simulation-driven approach to innovation is powered by our integrated suite of software which optimizes design performance across multiple disciplines encompassing structures, motion, fluids, thermal management, electromagnetics, system modeling and embedded systems, while also providing data analytics and true-to-life visualization and rendering.

19772 Pauling,
Foothill Ranch, CA 92610

T: 1(949)600-6400

E: adrianb@chromausa.com

W: www.chromausa.com

Booth Representatives: Adrian Butoi and Andrew Nelson



Chroma is the largest worldwide provider of power testing instruments and systems including programmable AC/DC Power Sources, AC/DC Electronic Loads, Digital Power Meters, MultiMeters, and Automated Testing Systems. Chroma's EV/HEV Automated Test Systems address the power conversion testing of several power electronic units including the EV Charger, HEV Controller, Motor Driver as well as Battery. Chroma's instruments and systems provide power conversion testing to meet rigorous standards during R&D, DVT and production phases.

Cogent Power

845 Laurentian Drive
Burlington, ON L7N 3W7 Canada

T: 1(905)637-3033

E: cknapp@cogentpowerinc.com

W: www.cogentpowerinc.com

Booth Representatives: Catherine Knapp, Michael Sonsogno and Sheri Peters



Impulse is the new standard for electric motor development, design and manufacturing. North America's first motor manufacturing and design center with its own electrical steel mill to enable truly customized efficiency and performance solutions. We solve the world's most unique motor problems with our LEAP innovation cycle and specialty materials.

BOOST YOUR EFFICIENCY

D&V Electronics

130 Zenway Blvd.
Woodbridge, Ontario L4H 2Y7 Canada

T: 1(905)264-7646

E: sales@dvelectronics.com

W: <http://www.dvelectronics.com/>

Booth Representatives: Michael Kelly, Paul Cowx and Rioch Dlyma



As a member of ALTANA, based in Wesel, Germany, our sister companies throughout the world offer a strong global approach to research, manufacturing and service that translates into creative solutions, dependable supply and consistently high quality.

6 Emma Street
Binghamton, NY 13905

T: 1(607) 766-9620

E: eddy@eandmpower.com

W: www.eandmpower.com/

Booth Representatives: David Eddy and Bill Peterson



E&M Power combines leading edge technology and innovative design to produce superior EV/HEV motor drive inverter and DC power system test solutions. The Active Load Emulator for automotive traction inverter testing mimics the 4-quadrant electrical output of 3-phase synchronous or induction motor/generators under user-controlled speed, torque and temperature conditions thereby simulating an electric drive train. This electronic dynamometer, with facility requirements suitable for laboratory installations, offers significant advantages in test capabilities and flexibility, and low acquisition and operating costs. The DC Emulator product line is a 30kW to 1.2MW DC source/sink that emulates dynamic, complex bidirectional loads with best in class frequency response, deterministic streaming with <1us latency, bidirectional full-power slew rate of <100us and repeatable noise/ripple generation. Ideal for testing vehicle energy systems and components, including batteries, and for HIL with real-time simulation to emulate large switching and regenerative loads to study their effect on the whole power system.

Elantas**20**

5200 North Second Street,
St. Louis Missouri 63147

T: 1(314)621-5700

E: dana.roschnafsky@altana.com

W: www.elantas.com/pdg.html

Booth Representatives: Dana Roschnafsky, Stephen Tuckwell and Bob Plewnarz



ELANTAS PDG, INC., based in St. Louis, Missouri, is a premier global supplier of specialty polymers for applications in the electrical and electronic industries. Founded over 80 years ago, ELANTAS PDG, INC. has been a pioneer in the development of impregnating resins, compounds and wire enamel technologies.

Electronic Concepts, Inc**25**

526 Industrial Way West
Eatontown, NJ 7724

T: 1(732)542-7880

E: syuen@ecicaps.com

W: www.ecicaps.com

Booth Representatives: Shirley Yuen, Mike Mosiello and Tim Frawley



Electronic Concepts Inc. is a multinational electronics company which designs and manufacturers innovative film capacitors for global industries. We offer a unique combination of resources including: vertically integrated manufacturing, modern and automated production, and broad engineering expertise. It is with these elements that allow us to design film capacitors that set the industry standard. ECI has the flexibility to handle any film capacitor requirement, with a commitment to quality and support. ECI holds qualifications for AS9100, ISO9001, TS16949 and UL 810 recognized.

Faraday Future**18**

18455 S Figueroa St.
Los Angeles, CA 90248

T: 1(800)228-7702

E: product@ff.com

W: www.faradayfuture.com

Booth Representatives:



We are a user-centric, advanced mobility company with headquarters in Silicon Valley and Southern California. Our team leverages the talents of passionate creators from the technology and automotive industries to bring premium, seamlessly connected electric vehicles.

Design:

FF 91 is the first production vehicle and flagship model from Faraday Future (FF). All-electric, autonomous-ready and seamlessly connected, it embodies our latest mobility advancements in performance, intelligence, and user experience. This is the reason we gave FF 91 a future-forward design that visually sets it apart from anything else on the road.

Performance:

Committed to breathtaking power that also allows us to breathe more freely, our engineers are pushing the limits of electric performance and range. Designed to be highly modular, our Variable Platform Architecture (VPA) securely houses the battery, powertrain and the FF Echelon Inverter – our first patent.

Technology:

Everything about our cutting-edge technology was created to make your life more connected, more engaging, more effortless. We designed our A.I. and user interaction to be as intuitive and convenient as possible, giving you back more of your invaluable time.

**HBM Test and Measurement**

2

19 Bartlett Street
Marlborough, MA 01752

T: 1(508)624-4500

E: mike.hoyer@hbm.com

W: www.hbm.com

Booth Representatives: Mike Hoyer and Brandon Loggins



HBM Test and Measurement offers an advanced motor power analyzer designed specifically for electric dynamic drivetrain testing producing

over 50 waveform and/or numeric results in seconds including dq0, Space Vector, efficiency or any custom measurement desired plus expandable to over 50 phases of power measurements and multiple torque, speed, CAN and/or physical and mechanical measurements in a single mainframe. With over 65 years of experience in

measuring, testing, analysis and simulation, HBM Test and Measurement is a leading global supplier of high-performance torque meters, data acquisition systems, sensors, transducers, amplifiers and data analysis software. Visit www.hbm.com

Electric Drivetrain Results In Seconds

Revolutionary power analyzer designed for electric drivetrains

- * **Dynamic Testing** - test load changes accurately
- * **Motor Mapping** - efficiency motor maps done in a few minutes
- * **dq0 & Space Vector** - results performed in real-time not days
- * **Upgrade** - greater than 50 phases in a single mainframe
- * **Measure** - multiple torque, speed, CAN, temp, strain, vibration
- * **Transfer** - 1000 results per second for system integration

**Hioki USA**

19

6 Corporate Drive
Cranbury, NJ 8512

T: 1(609)409-9109

E: erusso@hiokiusa.com

W: <http://hiokiusa.com>

Booth Representative: Ed Russo



Established in 1935, Hioki has grown to be a respected developer and manufacturer of innovative test and measurement instruments. Hioki, as a company, is committed to their corporate philosophy. This philosophy is founded on Respect for Humanity and its Contribution to Society. Hioki develops its business from the customer's perspective.

Our product list includes: Power Quality Analyzers (PQA); Insulation Testing; Data Acquisition Recorders; Power Demand Meters; Data Loggers; AM Meters; Volt Meters; Clamp-Ons; Digital Multimeters; Meters; Testers; Field Use Measurement Instruments; Electronic Measurement Instruments; Recorders and Automatic Test Equipment.

445 Hoes Lane
Piscataway, NJ 08850

T: 1(732)562-2663

E: peter.magyar@online.de

W: <https://ias.ieee.org/>

Booth Representatives: Peter Magyar and Jason Poon



The Industry Applications Society, as a transnational organization, is interested in advancement of the theory and practice of electrical and electronic engineering in the development, design, manufacture and application of electrical systems, apparatus, devices and controls to the processes and equipment of industry and commerce; promotion of safe, reliable and economic installations; industry leadership in energy conservation and environmental, health, and safety issues; creation of voluntary engineering standards and recommended practices; and the professional development of its membership.

John Deere

4

One John Deere Place
Moline, IL 61265

T: 1(732)562-2663

W: www.deere.com

Booth Representatives: Long Wu, Kent Wanner, Sumit Dutta, Scott Johnson and Brij Singh



John Deere Electronic Solutions (JDES) strives to further John Deere's global business by developing rugged and reliable electronic components and systems that thrive in the most extreme environments. To enhance innovation, expertise and competitiveness, JDES provides custom and off-the-shelf electronics and power electronics for original equipment manufacturers worldwide.

Karma Automotive

19

3080 Airway Avenue
Costa Mesa, CA 92626

T: 1(714)723-3474

E: Gniu@karmaautomotive.com

W: <https://www.karmaautomotive.com/>

Booth Representatives: Geng Niu



It is easy to describe a responsible company. It is harder to be one. Karma is more than just a name to us. We act with intention, with an awareness of what we are doing, and how and why we are doing it. All cars have a soul, and that soul is us. Hundreds of people making thousands of decisions that, we hope, speak to you.

Karma Revero

Vehicle 2

PERFORMANCE

The Revero delivers exhilarating performance thanks to its lightweight aluminum spaceframe construction and the near limitless torque produced by the vehicle's dual electric motors. Acceleration off the line is linear, smooth and swift.

DRIVABILITY

Responsiveness has never felt so supple. The low, centrally-mounted battery pack gives the Revero an exceptionally low center of gravity and near 50:50 weight distribution. The auto-leveling suspension system adjusts its stance when it needs to for perfect poise in all road conditions.

EXTENDED RANGE

The Revero's lithium-ion battery powers its electric motors to turn the rear wheels – giving up to 50 miles of pure-electric driving range. After that, the gas-powered generator automatically engages to continue your journey. Should you find yourself at the end of the Revero's 300-mile range, you have flexibility: you may recharge the lithium-ion battery or simply fill the gasoline tank and continue on to your destination.



LCS Company

13

1480 Sibley Memorial Highway
St. Paul, MN 55120

T: 1(651)452-1155
E: mruvelson@lcscompany.com
W: www.lcscompany.com
Booth Representative: Matt Ruvelson



LCS Company is a Custom Manufacturer of Precision Short, Medium & Long Run Stampings. We manufacture electrical and mechanical assemblies, tight tolerance ultra thin miniature parts, laminations, drawn parts, shims, washers and gears. LCS Company has a proven track record in supplying top quality products when you need them!

Linear Labs

40

5603 Weatherford Hwy
Granbury, TX 76049

T: 1(214)909-3333
E: jcurry@linearlabsinc.com
W: <http://www.linearlabsinc.com/>
Booth Representative:



Linear Labs' platform technology is an advance of great significance in electric rotary motors, electric power generators and electric linear actuators. The technology addresses a wide spectrum of existing multi-billion dollar global markets including Electric Vehicles. Linear Labs' highly power-efficient technology provides twice the torque and power for the same size when compared, and is scalable to any HP size. The uniqueness in Linear Labs magnetic configuration and nomenclature set it apart from all conventional electric machines, fosters a much higher advantage in flux density and torque, and minimizes the losses found with current electric machine technologies. Go further...

MacAUTO

17

1280 Main Street West, ITB-A109
Hamilton, Ontario L8S 4K1

T: 1(289) 674-0250 ext. 59053
E: bilginb@mcmaster.ca
W: <http://hybrid.mcmaster.ca/>
Booth Representative: Berker Bilgin



MacAUTO is the coordinating body for automotive research and education at McMaster University. The University's numerous automotive-related research institutes and centers work with industry, government and academic partners in developing and commercializing new technologies including hybrid and electric vehicles, powertrains, and powertrain components and control.

Mathworks

21

3 Apple Hill Dr.
Natick, MA 01760

T: 1(508)647-7000
E: jennifer.rose@mathworks.com
W: <https://www.mathworks.com/>
Booth Representatives:



The MATLAB and Simulink product families are fundamental applied math and computational tools at the world's educational institutions. Adopted by more than 5000 universities and colleges, MathWorks products accelerate the pace of learning, teaching, and research in engineering and science. MathWorks products also help prepare students for careers in industry worldwide, where the tools are widely used for data analysis, mathematical modeling, and algorithm development in collaborative research and new product development. Application areas include data analytics, mechatronics, communication systems, image processing, computational finance, and computational biology.

300 Leo Pariseau, Suite 2222
Montreal, QC, H2X 4B3

T: 1(514)849-8752

E: Chad_Ghahamzan@mentor.com

W: <http://www.mentor.com>

Booth Representatives: Luay Ghafari and John Wanjiku

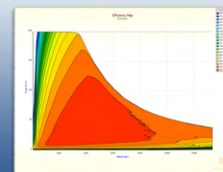
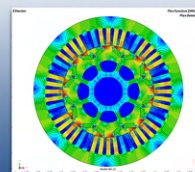
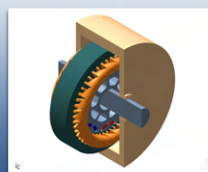
MagNet 2D/3D for accurate EM-field simulations & MotorSolve for complete electric machine design – formerly from Infolytica, which is now part of Mentor, A Siemens Business. FloEFD for upfront 3D computation fluid dynamics solution, fully integrated with your CAD workflows. To learn more, please visit www.mentor.com/products/mechanical/

Mentor[®]
A Siemens Business

Simulation & Test Solutions for Thermal & Electromagnetic Design + Reliability

Accelerating innovation with:

- Electromagnetic Field Simulations
- Computational Fluid Dynamics (CFD)
- Thermal Characterization



Mentor's CAE simulation and test have led the market for decades, providing a broad portfolio of best-in-class simulation, analysis, and test/measurement solutions

Mentor[®]
A Siemens Business

Motor Design Limited

33

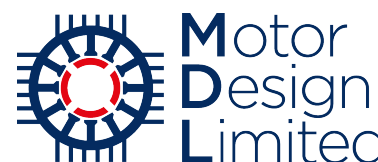
4 Scotland Street Ellesmere
Shropshire SY12 0EG UK

T: +44 (0) 1691 623305

E: Heide.Lewis@motor-design.com

W: <https://www.motor-design.com/>

Booth Representatives: James Goss and Giuseppe Volpe



Motor Design Ltd (MDL) is a world leader in developing advanced software and tools for designing electrical machines. We have been developing electric motor software since 1998. Our software, Motor-CAD, is recognized worldwide as class-leading motor design software. We use our expert knowledge of designing electric motors to provide software support to electric machine designers at some of the most prestigious aerospace, automotive and industrial companies worldwide.

The design consulting services we offer cover all aspects of motor design from concept, performance optimization, through to test and prototype development. Our customers benefit from our years of experience in designing electric motors and in-depth knowledge of simulation techniques. Research and innovation is at the heart of what we do. We are active on several international research funded projects and have developed advanced motor solutions for the automotive and aerospace markets.

NH Research, Inc.

35

16601 Hale Avenue
Irvine, California 92606

T: 1 (262) 244-7550

E: tribaudo@nhresearch.com

W: <http://nhresearch.com/>

Booth Representatives:



NH Research, Inc. designs and manufactures power test instruments & solutions used to functionally test power & energy devices such as EV/HEV batteries, DC power supplies, converters, telecom rectifiers, chargers, adapters, grid tied inverters, stand-alone inverters and UPSs. NHR test equipment consists of power supply testers, power instruments such as AC and DC programmable electronic loads, regenerative battery test systems & battery simulator that provide multiple independent channels of charge/discharge testing on multiple battery modules, packs, DC regulators and motors. Flexibility to add more channels in parallel to support higher current requirements and also add channels can be done to increase channel count. Optional software packages are available and offer instrument & system level control to create cycle tests from basic to complex drive cycle testing for each channel or channel groups.

1751 Rue Richardson, Suite 2525,
Montréal, QC H3K 1G6, CANADA

T: (1) 514-935-2323

E: Vanessa.Broccoli@opal-rt.com

W: <http://www.opal-rt.com>

Booth Representatives: Pierre-Francois Allaire,
Maxim Beaudoin and Derek Boychuk

OPAL-RT empowers engineers and researchers with accessible, cutting-edge, real-time simulation technology to accelerate the development of better products and more reliable energy transmission. Since 1997, industries including automotive, aerospace, power electronics and power generation have increasingly turned to OPAL-RT, transforming the company into a world leader in real-time simulation and Hardware-in-the-Loop (HIL) testing equipment for electrical, electro-mechanical and power electronics systems.

FROM IMAGINATION... TO REAL-TIME



OPAL-RT
TECHNOLOGIES

OPAL-RT is a world leader in **real-time simulation** and **Hardware-in-the-Loop (HIL)** testing equipment. OPAL-RT empowers **engineers and researchers** with accessible, cutting-edge, real-time simulation technology to accelerate the **development** of better products and more **reliable** energy transmission.

5 Upland Road, Suite 4
Cambridge, MA 02140

T: 1(617)209-2121

E: eberle@plexim.com

W: <https://www.plexim.com/>

Booth Representatives: Kris Eberle and Beat Arnet

plexim
electrical engineering software

Plexim provides solutions for the design and test of power electronic and motor drive systems and their associated controls. Its flagship offering is the modeling software PLECS, available in the MATLAB/Simulink environment and as an independent platform. PLECS, known for its fast speed and robustness, includes a comprehensive component library comprising thermal, magnetic, and mechanical domains. The RT Box is a real-time simulation platform designed for Hardware-in-the-Loop (HIL) testing and Rapid Control Prototyping (RCP) that fully integrates into the PLECS software environment. The PLECS processor-in-the-loop (PIL) tool allows co-simulation of embedded code with an offline plant model.

Powersys Solutions

5

2000 Town Center Suite 1900
Southfield, MI 78075

T: 1 (727)288-8100

E: f.peyret@powersys.fr

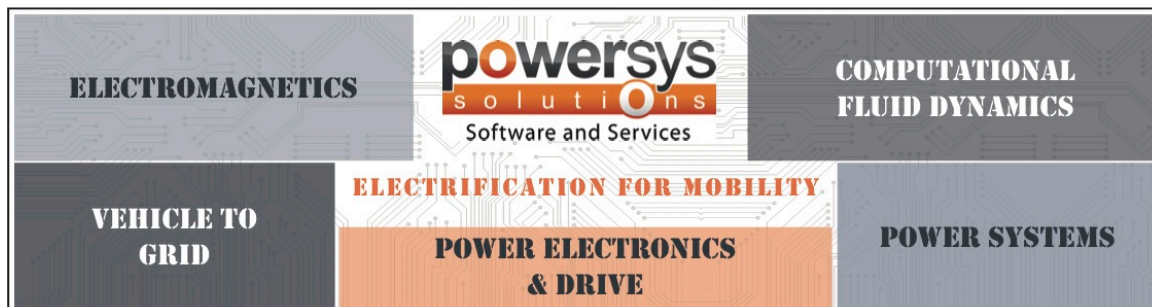
W: <https://powersys-solutions.com/>

Booth Representatives: Emmanuel Rutovic, Eduardo Montalvo, Illiesse Aichi and Gaultier Launay



SOFTWARE & SERVICES

Powersys is a consulting and software company providing global solutions of electrification for mobility. We aim at serving local and global industry, research and education in the field of Electromagnetics, Power electronics & Drive, Power Systems, Computational Fluid Dynamics and Vehicle to Grid.



RTDS Technologies

32

100-150 Innovation Drive
Winnipeg, Manitoba R3T RF1

T: 1(204)594-9711

E: Christine@rtds.com

W: www.rtds.com



RTDS Technologies Inc., the exclusive supplier of the RTDS® Simulator, has been the world standard of real time digital power system simulation for over 20 years. Used by over 350 organizations in 43 countries worldwide, the RTDS Simulator

This is the Simulator for electrified transport.

The RTDS® Simulator is the most powerful tool available for the simulation and closed-loop testing of electric vehicles, electrified railway systems, and electric ships. The RTDS® Simulator offers game-changing detail and flexibility in the simulation and testing of power electronics and motor drives.

has been established as the de facto method for testing the controls of high power systems, such as HVDC and FACTS. But it can do so much more for power electronics engineers. Today, the RTDS Simulator offers the fastest and most accurate solution for simulating power electronics in both high and low power applications. The controls for custom topology converters, drives, DERs, and microgrids can be tested in a closed loop using this powerful and flexible tool. Learn more about the RTDS Simulator at www.rtds.com.

Software Motor Company

34

1295 Forgewood Avenue
Sunnyvale, CA, 94089

T: 1(669)224-4377

E: piyush.desai@softwaremotor.com

W: <https://softwaremotor.com/>

Booth Representative: Piyush Desai, Earl Fairall and David Miles



Software Motor Company (SMC) was founded in Silicon Valley to bring intelligence to electric motors, which consume over 45% of global electricity. SMC's Smart Switched Reluctance Motor (SSRM) combines patented hardware and software control with modern IoT technologies to enable the most efficient, reliable, and intelligent motors on the market. SMC motors deliver energy savings of 20 to 50 percent compared to NEMA Premium Efficiency standards while providing full programmability and connectivity.

Wujiang City, Jiang Xingdong Road
215217 Suzhou China

T: 86-512-63326688-8036

E: dlbchina@aol.com

W: <https://www.zcparts.com>

Booth Representative: Bin Li and Haijuan Qiu



Suzhou Zhongcheng is an R&D leading company in ac compressor industry in China. It owns strong R&D capability, first level test center and world class manufacturing facility. Zhongcheng is a company that never stops improving. Zhongcheng has 15 years' experience in R&D and manufacturing of a/c compressors, millions of traditional piston type and scroll type compressors have been produced for China OE market and global market. Back to 2013, Zhongcheng developed electric a/c compressors for China OE customers. A full range of products (16cc,27cc,34cc and 66cc) have been developed, which can be used for various applications from mini vehicle to HD truck, bus, even train and helicopter. Zhongcheng's e-compressors are being used by OE customers in these purposes: Cooling, Heating, Battery cooling and Overnight air conditioning. 3rd party comparison tests shows that Zhongcheng's product is about 3% better than competitor in China and similar to Japan's manufacturer in terms of performance and noise level.

TDK Lambda: High Power Division

22

405 Essex Rd
Neptune, NJ 07753

T: 732-922-9300

E: george.scherma@us.tdk-lambda.com

W: <http://us.tdk-lambda.com/hp/>

Booth Representatives: Emailed Bonnie



TDK-Lambda Americas High Power Division is a leading manufacturer of Programmable, High Density Power Supplies located in Neptune, N.J., U.S.A.. The Genesys™ series of Programmable Power Supplies has the highest density in power levels from 750W through 15KW with output ranges up to 600V and 1,000A.

Tridus Magnetics

27

145 W.Victoria Street
Rancho Dominguez, CA 90220

T: 1(310)884-3200

E: tmoon@tridus.com

W: www.tridus.com

Booth Representative: Tracy Moon, George Zhang and Paul Moon



Tridus is a supplier of permanent magnets and permanent magnet assemblies. Tridus is a US company with a China presence providing customers with a low cost and high reliability path to sintered and bonded NdFeB magnet manufacturing. Please stop by our booth to discuss our new line of NdFeB magnets that exhibit improved magnetic properties while thriving heavy rare earths.

IEEE-Transportation Electrification Community (TEC) And Power Electronics Society (PELS)

31

445 Hoes Lane
Piscataway, New Jersey

T: 1(732)465-6460

E: a.tomaszewski@ieee.org

W: <https://tec.ieee.org/>

Booth Representative: Alicia Tomaszewski



The IEEE Transportation Electrification Community coordinates broad and deep activities throughout the IEEE in the growing electrification revolution across transportation domains, including advances in electric and hybrid cars, more-electric ships and aircraft, rail systems, personal transport, and the motive, storage, power grid, electronic intelligence, and control technologies that make them possible. Creates leadership, professional development, standards development, and other opportunities for practitioners, researchers, students, and all IEEE members interested in electric transportation.

395 Oyster Point Blvd. Suite 230
South San Francisco, CA, 94080 USA

T: 1(650)827-7928

E: freddyfernandez@yunshengusa.com

W: www.yunshengusa.com

Booth Representative: Freddy Fernandez, John Ebert and Jonathan Huang



YUNSHENG USA

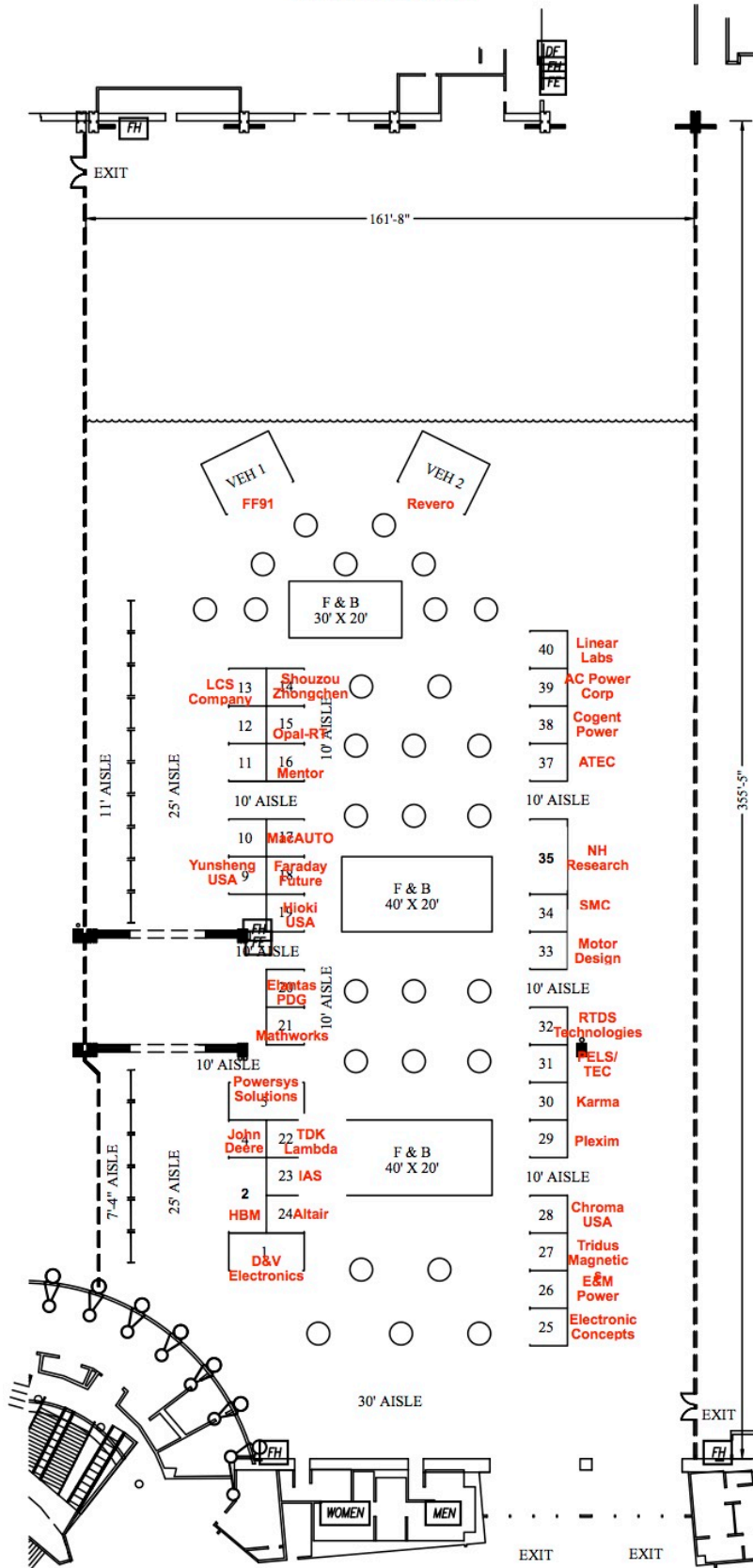
Yunsheng is a Hitachi-licensed manufacturer of NdFeB magnetic materials. With 8000+ employees, located across three continents, Yunsheng is the largest provider of NdFeB materials and magnetic assemblies in the world, with over 7500 tons of existing Neo production

ITEC 2018

LONG BEACH CONVENTION CENTER

EXHIBIT HALL B

JUNE 13-15, 2018



Conference Partners



ITEC'18 Lanyard Partner



ITEC'18 Media Partner